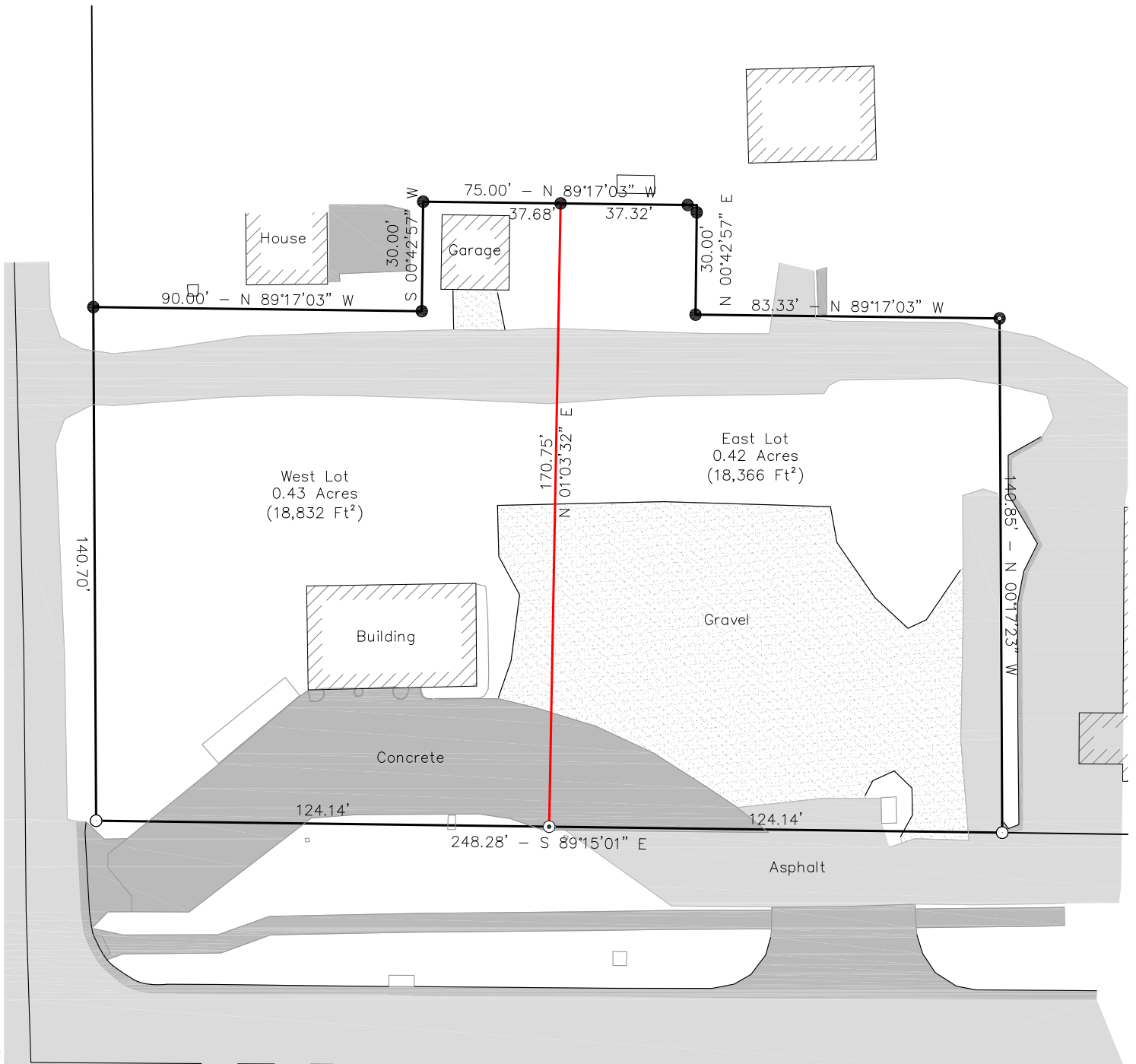


# Exhibit A

Sheet 1 of 1  
 S/2 of the SW/4 Sec 27 - T2S - R7E  
 Marshall County, Kansas



**LEGEND**

- Found Corner (as described)
- Set Monument (1/2" x 30" rebar w/pink plastic cap)
- ⊙ Set Monument ("+" in Concrete)



File Name: 182862-Buck, Ren\_Lot\_Split.dwg - Plot Date: 8/2/2018 4:30 PM