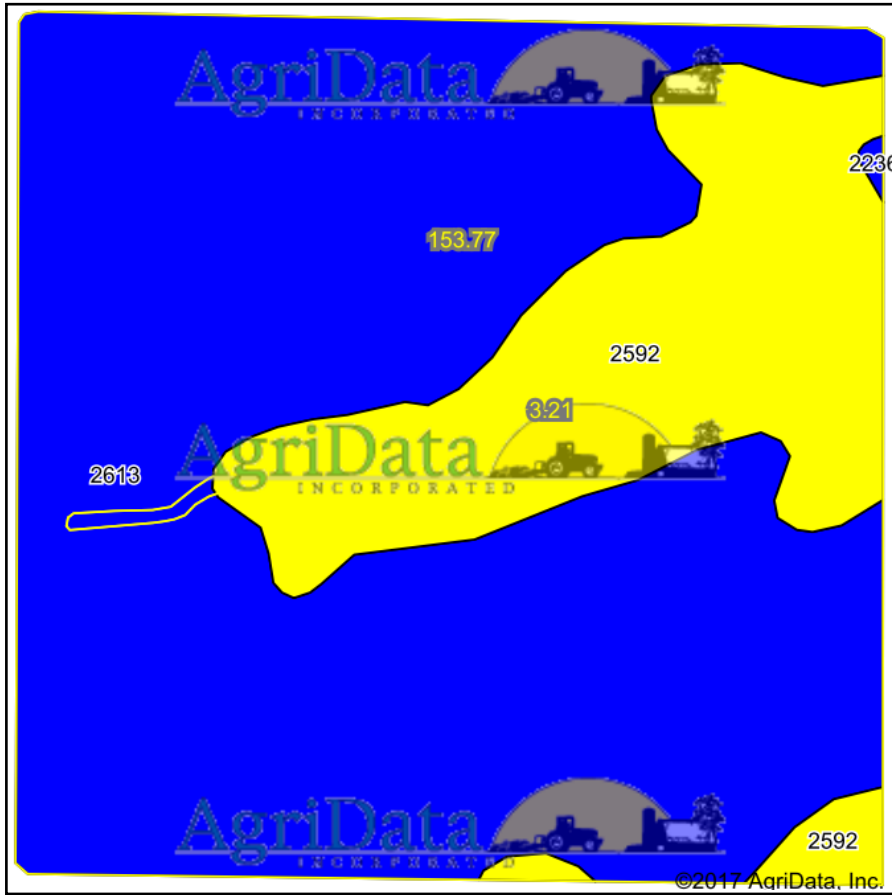
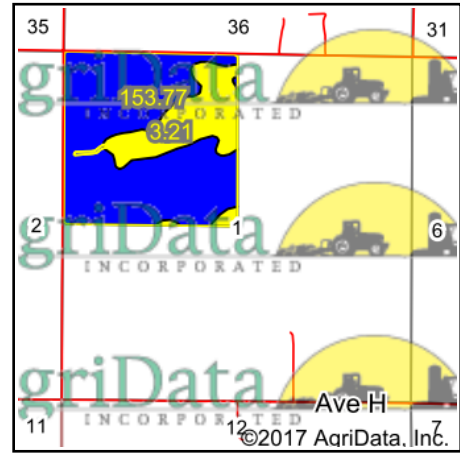


Soils Map



Soils data provided by USDA and NRCS.



State: **Kansas**
 County: **Rush**
 Location: **1-17S-18W**
 Township: **Big Timber**
 Acres: **156.98**
 Date: **9/5/2017**

Maps Provided By:



© AgriData, Inc. 2017

www.AgriDataInc.com



Area Symbol: KS165, Soil Area Version: 15

Code	Soil Description	Acres	Percent of field	Non-Irr Class Legend	Non-Irr Class *c	Irr Class *c
2613	Harney silt loam, 1 to 3 percent slopes	119.96	76.4%		Ile	Ile
2592	Corinth silty clay loam, 3 to 7 percent slopes	36.81	23.4%		IVe	IVe
2236	Roxbury silt loam, occasionally flooded	0.21	0.1%		IIw	IIw

*c: Using Capabilities Class Dominant Condition Aggregation Method

Soils data provided by USDA and NRCS.