

# Opportunity Awaits!

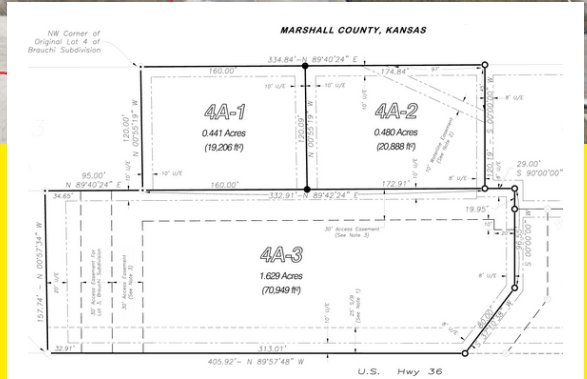


4A-3 BRAUCHI HEIGHTS, MARYSVILLE, KS



## PROPERTY FEATURES

- 📍 **1.629 +/- Acre Commercial Lot**
- **Highway 36 Frontage**
- **City Water Line Present**
- **Sewer Infrastructure Needed**



**\$ 250,000**

Jessica Leis, Broker



📞 **785.562.7817**  
✉ [jessica@midwestlandandhome.com](mailto:jessica@midwestlandandhome.com)  
🌐 [www.MidwestLandandHome.com](http://www.MidwestLandandHome.com)

