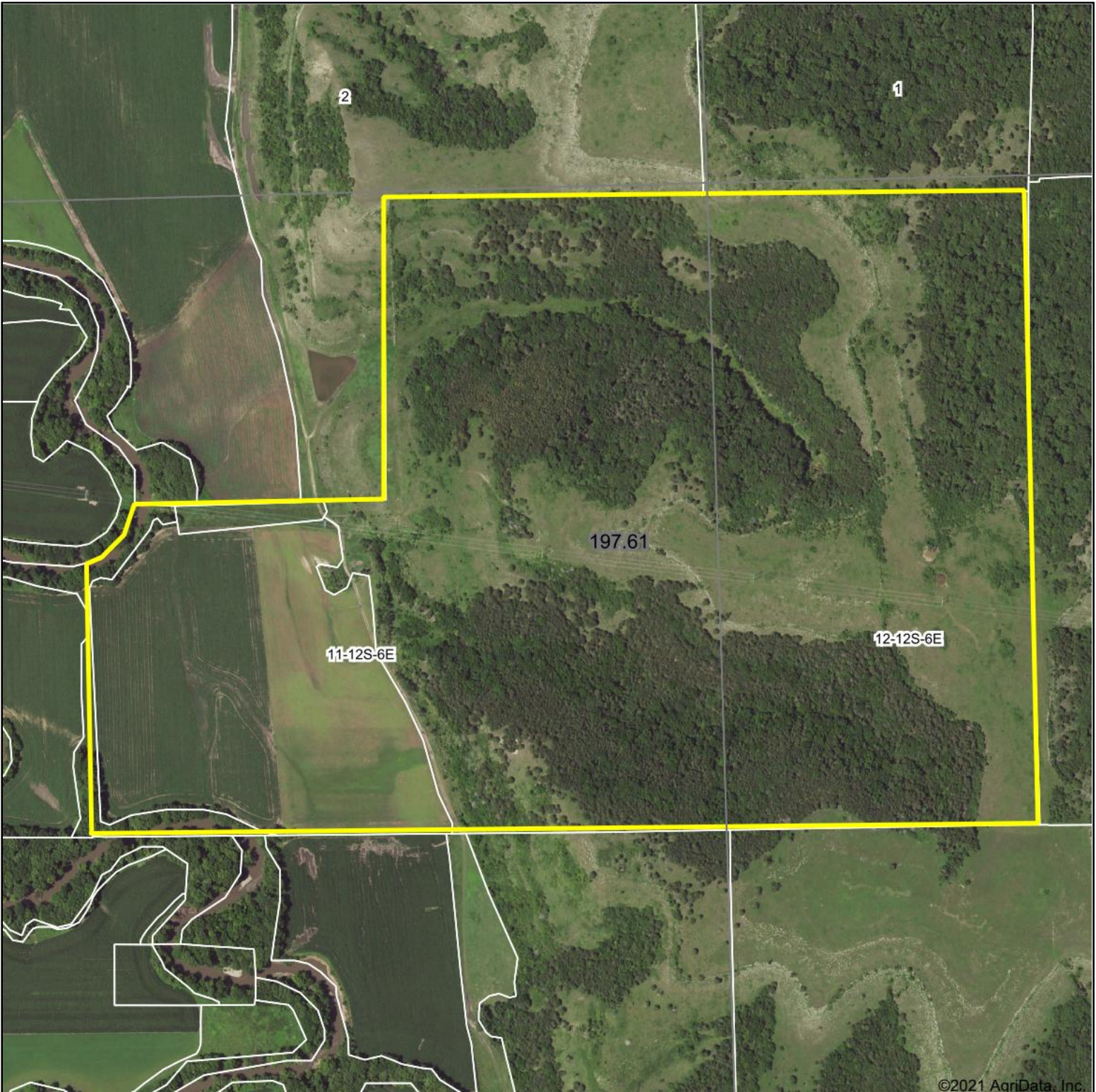


Aerial Map



©2021 AgriData, Inc.

Midwest Land
and Home

Map Center: 39° 1' 32.17, -96° 43' 36.93



11-12S-6E
Geary County
Kansas



2/15/2021

Maps Provided By:
 **surety**[®]
CUSTOMIZED ONLINE MAPPING
© AgriData, Inc. 2021 www.AgriDataInc.com

Field borders provided by Farm Service Agency as of 5/21/2008.