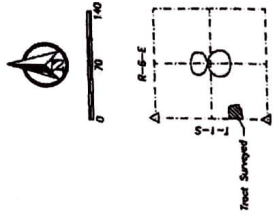


State of Kansas - Marshall County  
 Martha R. Beach, Register of Deeds  
 Book 11 Page: 431  
 Total Price: \$21.00



NUMBER ✓  
 ALPHA ✓  
 SCANNED ✓  
 PROOF ✓  
 READ/REL ✓



ENGINEERS  
 ARCHITECTS  
 SURVEYORS  
**CES**  
 1100 Broadway, Suite 600  
 Overland Park, KS 66204

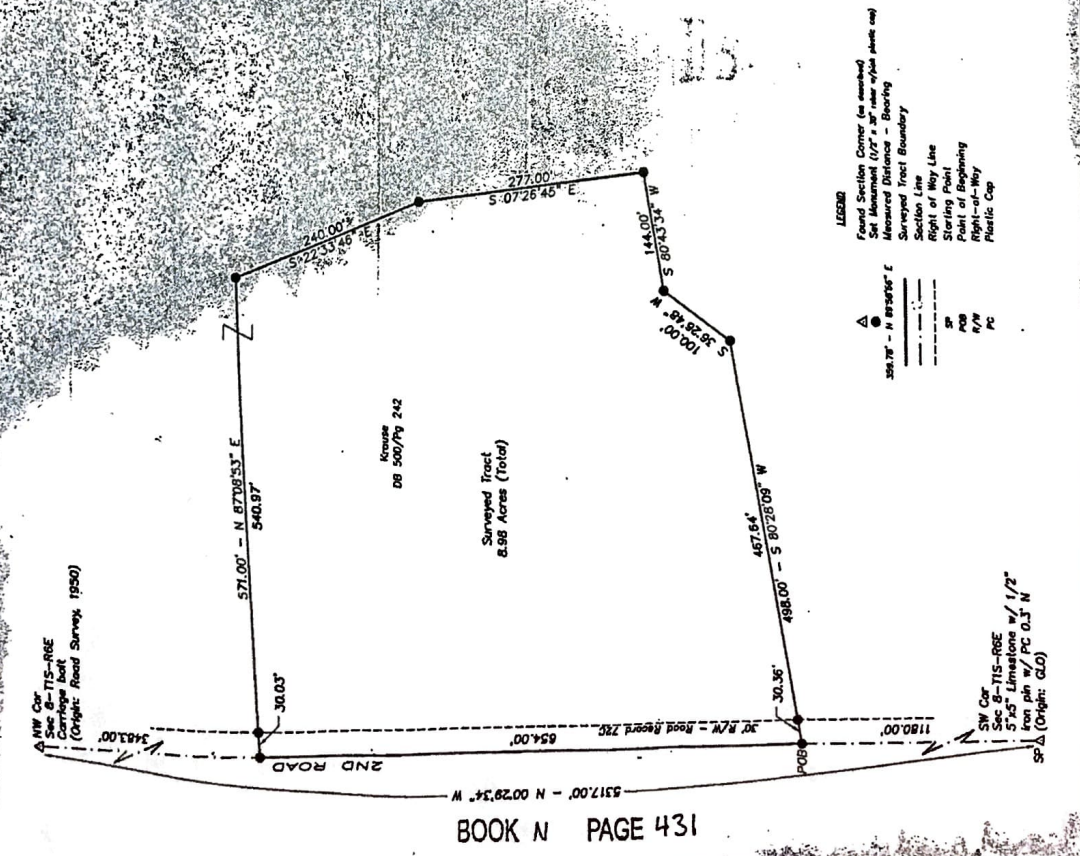
1. Reference line for Section Corners have been filed with the Kansas State Historical Society.  
 2. All distances are in feet and fractions of a foot.  
 3. All bearings are in degrees, minutes and seconds.  
 4. The bearings and distances were measured by the Surveyor on the ground.  
 5. The bearings and distances were measured by the Surveyor from the plat of the Survey of the SW-1/4 of Section 8, T-1-S, R-6-E, in the 6th P.M. of Marshall County, Kansas, and that the bearings and distances were measured by the Surveyor on the ground.  
 6. The bearings and distances were measured by the Surveyor from the plat of the Survey of the SW-1/4 of Section 8, T-1-S, R-6-E, in the 6th P.M. of Marshall County, Kansas, and that the bearings and distances were measured by the Surveyor on the ground.  
 7. The bearings and distances were measured by the Surveyor from the plat of the Survey of the SW-1/4 of Section 8, T-1-S, R-6-E, in the 6th P.M. of Marshall County, Kansas, and that the bearings and distances were measured by the Surveyor on the ground.  
 8. The bearings and distances were measured by the Surveyor from the plat of the Survey of the SW-1/4 of Section 8, T-1-S, R-6-E, in the 6th P.M. of Marshall County, Kansas, and that the bearings and distances were measured by the Surveyor on the ground.  
 9. The bearings and distances were measured by the Surveyor from the plat of the Survey of the SW-1/4 of Section 8, T-1-S, R-6-E, in the 6th P.M. of Marshall County, Kansas, and that the bearings and distances were measured by the Surveyor on the ground.  
 10. The bearings and distances were measured by the Surveyor from the plat of the Survey of the SW-1/4 of Section 8, T-1-S, R-6-E, in the 6th P.M. of Marshall County, Kansas, and that the bearings and distances were measured by the Surveyor on the ground.

Carl H. Peschel, Registered Professional Surveyor (K.S.A. 48-1201), do hereby certify that the attached plat is a true and correct representation of the survey in the West Half of the Southwest Quarter (W-1/2) of the SW-1/4 of Section 8, in Township 1 South, Range 6 East of the 6th P.M., Marshall County, Kansas, and that the bearings and distances were measured by me or under my direct supervision and conducted on May 24, 2018.  
 IN WITNESS WHEREOF, I have hereunto set my hand and the seal of my office at Overland Park, Kansas, this 24th day of May, 2018.



Approved By: Steven J. Combs, Registered Professional Surveyor (K.S.A. 48-1201), do hereby certify that this plat meets the technical requirements for filing. I have not personally measured the plat, but I have verified the accuracy of the bearings and distances shown thereon.  
 Steven J. Combs, Registered Professional Surveyor (K.S.A. 48-1201), do hereby certify that this plat meets the technical requirements for filing. I have not personally measured the plat, but I have verified the accuracy of the bearings and distances shown thereon.

Robert A. Peschel, U.S. Army  
 CES Group P.A.  
 1102 Broadway  
 Overland Park, KS 66204  
 785-388-5144



- LEGEND**
- Found Section Corner (as marked)
  - All Boundaries (1/2" = 100')
  - Measured Distances (as marked)
  - Surveyed Tract Boundary
  - Section Line
  - Right of Way Line
  - Starting Point
  - Point of Beginning
  - Right-of-Way
  - Plastic Cap

Survey Requested By: [Name]  
 Surveyed By: C.J.F.  
 Checked By: C.J.F.  
 Date: 7/18/2018  
 W.O.# 192072  
 Sheet 1 of 1

Personnel on Witness:  
 Robert A. Peschel, U.S. Army  
 Chief, Professional

SW Cor. of T-1-S-R-6E  
 5'x5' Limestone w/ 1/2" iron pin w/ PC 0.1" N  
 (Origin: GLO)

Plat of Survey  
 IN THE W-1/2 OF THE SW-1/4 OF SECTION 8, T-1-S, R-6-E,  
 OF THE 6th P.M., MARSHALL COUNTY, KANSAS