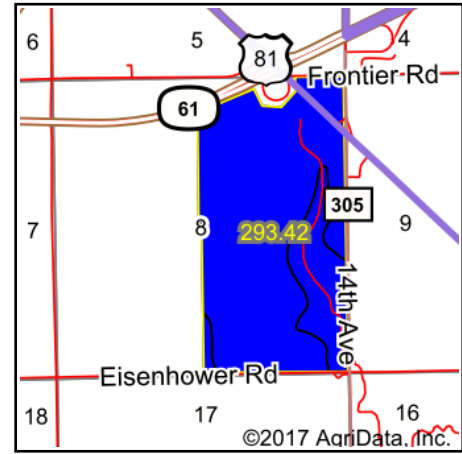
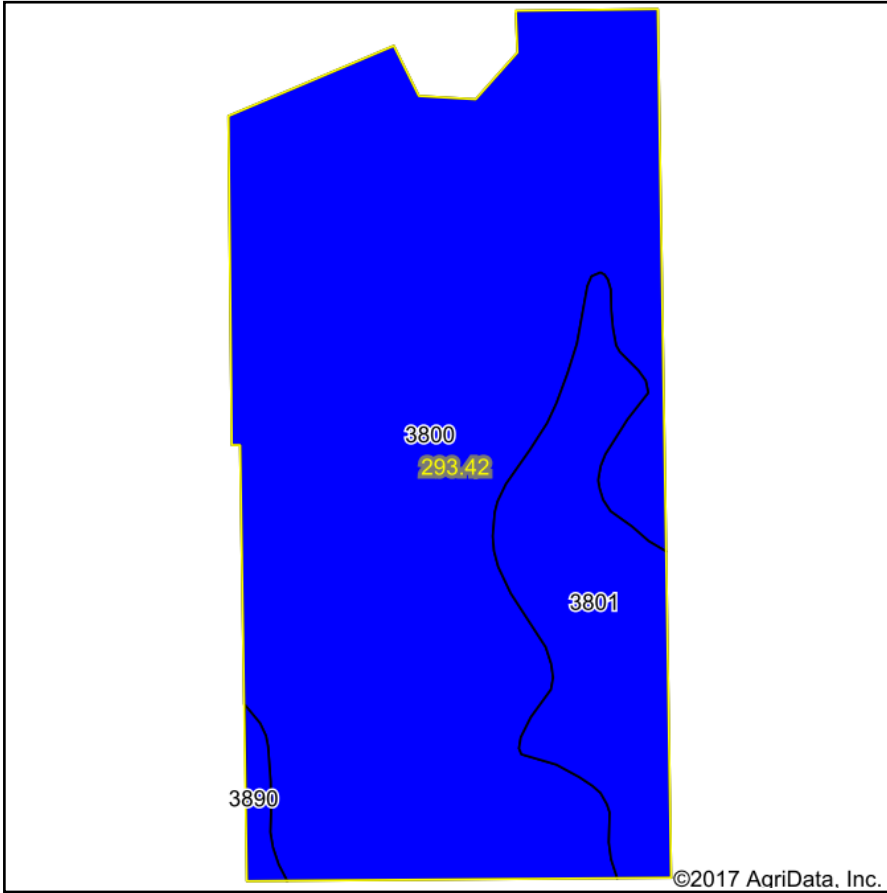


Soils Map



State: **Kansas**
 County: **McPherson**
 Location: **9-20S-3W**
 Township: **King City**
 Acres: **293.42**
 Date: **9/13/2017**




Midwest Land 
and Home

Maps Provided By:

 CUSTOMIZED ONLINE MAPPING
 © AgriData, Inc. 2017 www.AgriDataInc.com



Area Symbol: KS113, Soil Area Version: 14

Code	Soil Description	Acres	Percent of field	Non-Irr Class Legend	Non-Irr Class *c	Irr Class *c
3800	Crete silt loam, 0 to 1 percent slopes, loess plains and breaks	241.02	82.1%		Ils	Ils
3801	Crete silt loam, 1 to 3 percent slopes, loess plains and breaks	48.87	16.7%		Ile	Ile
3890	Ladysmith silty clay loam, 0 to 1 percent slopes	3.53	1.2%		Ils	Ils

*c: Using Capabilities Class Dominant Condition Aggregation Method

Soils data provided by USDA and NRCS.