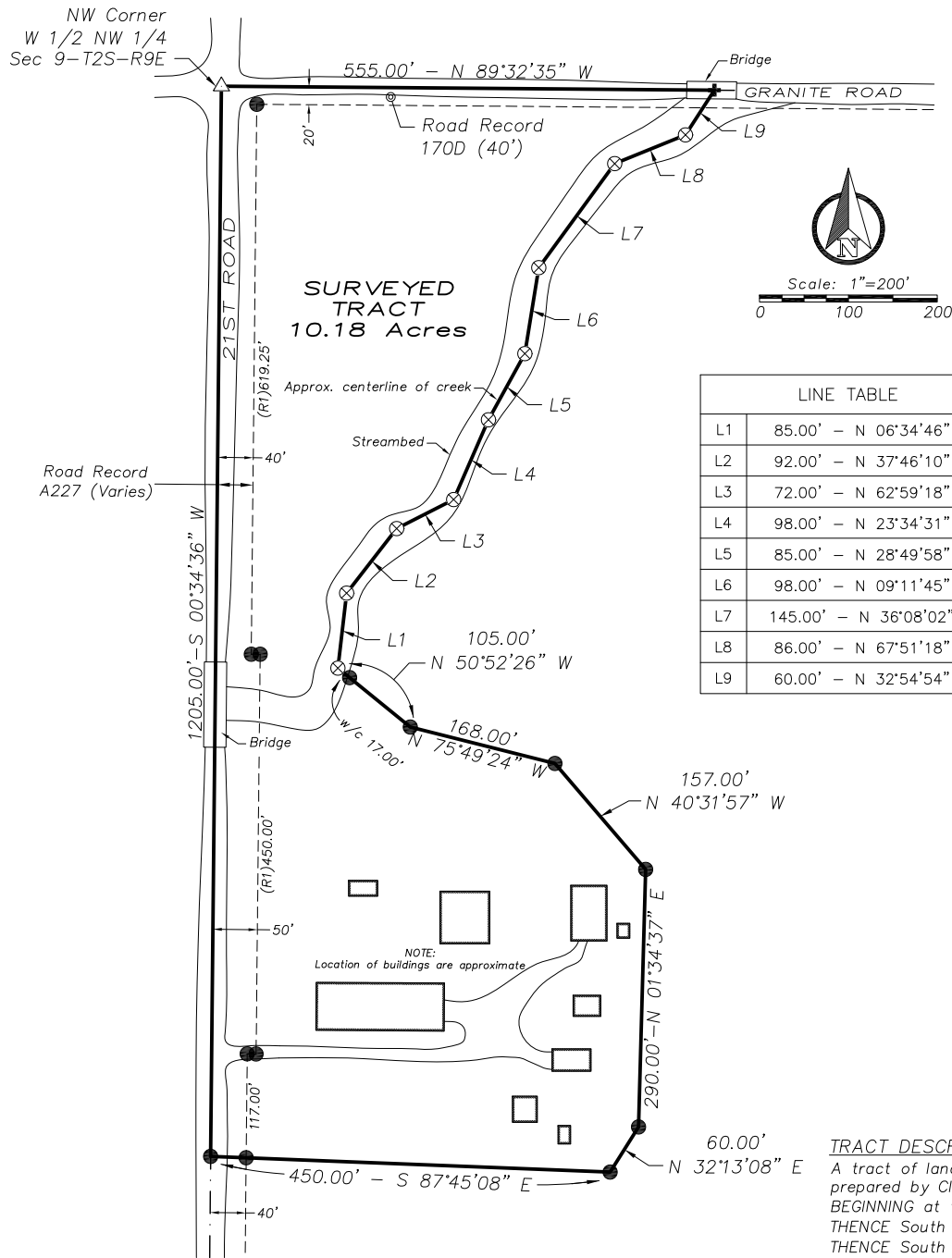


Plot Date: 5/16/2023 2:14 PM — File Name: 223413 - O'Neil Trust_Survey (1).dwg — If the surveyor's signature is not blue in color, the drawing is a copy that should be assumed to contain unauthorized alterations. The certification contained on this document shall not apply to any copies.



LINE TABLE	
L1	85.00' - N 06°34'46" E
L2	92.00' - N 37°46'10" E
L3	72.00' - N 62°59'18" E
L4	98.00' - N 23°34'31" E
L5	85.00' - N 28°49'58" E
L6	98.00' - N 09°11'45" E
L7	145.00' - N 36°08'02" E
L8	86.00' - N 67°51'18" E
L9	60.00' - N 32°54'54" E

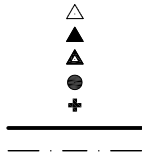
SURVEYOR CERTIFICATE:
I, Clint J. Friedrichs, Kansas Land Surveyor #1709,
do hereby certify this plat represents the true and
accurate results of a survey conducted by me or under
my direct supervision on March 3, 2023.

Clint J. Friedrichs, PLS #1709

TRACT DESCRIPTION:

A tract of land in the West half Northwest quarter (W 1/2 NW 1/4) of Section 9, Township 2 South, Range 9 East, of the 6th P.M., in Marshall County, Kansas, prepared by Clint J. Friedrichs, PLS #1709 on March 22, 2023, being more particularly described as follows:
BEGINNING at the Northwest (NW) corner of the West Half of the Northwest Quarter (W 1/2 of the NW 1/4) of said Section 9;
THENCE South 00°34'36" West along the west line of the W 1/2 of said NW 1/4 for a distance of 1205.00 feet;
THENCE South 87°45'06" East for a distance of 450.00 feet; THENCE North 32°13'08" East for a distance of 60.00 feet;
THENCE North 01°34'37" East for a distance of 290.00 feet; THENCE North 40°31'57" West for a distance of 157.00 feet;
THENCE North 75°49'24" West for a distance of 168.00 feet; THENCE North 50°52'26" West for a distance of 105.00 feet to the centerline of creek;
THENCE Northeasterly along the centerline of said creek for the following nine (9) courses;
THENCE North 06°34'46" East for a distance of 85.00 feet; THENCE North 37°46'10" East for a distance of 92.00 feet;
THENCE North 62°59'18" East for a distance of 72.00 feet; THENCE North 23°34'31" East for a distance of 98.00 feet;
THENCE North 28°49'58" East for a distance of 85.00 feet; THENCE North 09°11'45" East for a distance of 98.00 feet;
THENCE North 36°08'02" East for a distance of 145.00 feet; THENCE North 67°51'18" East for a distance of 86.00 feet;
THENCE North 32°54'54" East for a distance of 60.00 feet to the north line of the W 1/2 of said NW 1/4;
THENCE North 89°32'35" West along said north line for a distance of 555.00 feet to the POINT OF BEGINNING.
Containing 10.18 acres more or less. Subject to all easements, restrictions and right-of-way both visible and of record.
(The basis of bearings for said description are based on the Kansas Regional Coordinate System Zone-10.)

LEGEND



Found Section Corner (as described)
Set Section Corner (1/2" x 30" rebar w/aluminum cap, CLS #155)
Set Section Corner (1/2" x 30" rebar w/plastic cap, CLS #155)
Set Monument (1/2" x 30" rebar w/pink plastic cap CLS #155)
Set Monument ("+" cut on concrete)
Surveyed Tract Boundary
Section Line

POB
(G)
(S1)

KRCS ZONE 10

Calculated Corner / Physical Evidence (Nothing Set)
Point of Beginning
General Land Office (GLO) Distance
Survey C62 (MS Co. Public Works Dept.)
Right of Way Line
Basis of Bearing

POB
NW Corner, W 1/2, NW 1/4
Section 9-T2S-R9E
4"x10"x8" limestone
(1/2"x30" rebar on
East & West sides)

See Inset

SW Corner, W 1/2, NW 1/4
Section 9-T2S-R9E
1/2"x30" rebar w/ aluminum cap
(CES CLS#155) over limestone
(Origin: GLO)

SE Corner, W 1/2, NW 1/4
Section 9-T2S-R9E

Kittner Homestead
DB 518 / Pg 481
DB 318 / Pg 586

SE Corner SW 1/4
Sec 9-T2S-R9E
6"x7" red flint stone w/ rebar below
(Origin: GLO)

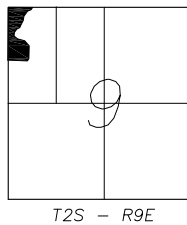
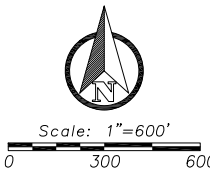
WEST HALF NW 1/4

O'Neil Trust
DB 355 / Pg 578

EAST HALF NW 1/4

Koch
DB 470 / Pg 656

NE Corner, E 1/2, NW 1/4
Section 9-T2S-R9E



Project#: 223413
Surveyed: cjf / bew
Detailed: dek
Reviewed: rap
Sheet: 1 of 1

PLAT OF SURVEY
IN THE W 1/2 NW 1/4 OF SECTION 9, T2S, R9E,
OF THE 6th P.M., MARSHALL COUNTY, KANSAS

Requested By:

Marylyn O'Neil Trust



CES GROUP - 605 Broadway, Marysville KS - 785.562.5148 - cesengineering.com

Official Filing Copy
will be Signed