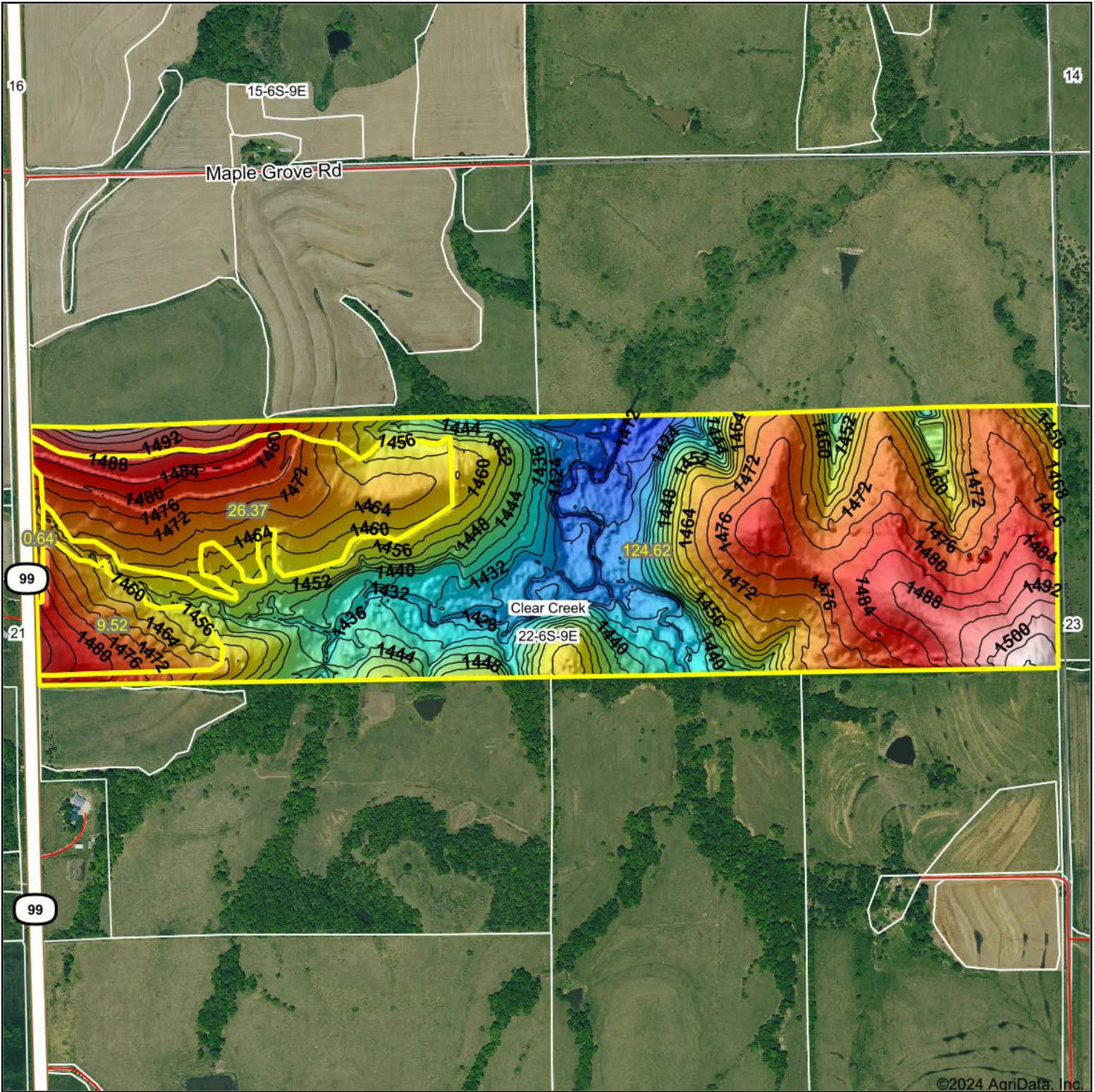


Topography Hillshade



<p>Low Elevation High</p>	<p>Source: USGS 3 meter dem Interval(ft): 4 Min: 1,408.7 Max: 1,508.3 Range: 99.6 Average: 1,460.8 Standard Deviation: 20.93 ft</p>	<p>0ft 798ft 1597ft</p> <p>©2024 AgriData, Inc.</p> <p>22-6S-9E Pottawatomie County Kansas</p> <p>2/29/2024</p> <p>Boundary Center: 39° 31' 0.8, -96° 23' 52.07</p>
---------------------------	---	--

MIDWEST LAND & HOME

Maps Provided By:

surety
 CUSTOMIZED ONLINE MAPPING

© AgriData, Inc. 2023 www.AgriDataInc.com

Field borders provided by Farm Service Agency as of 5/21/2008.