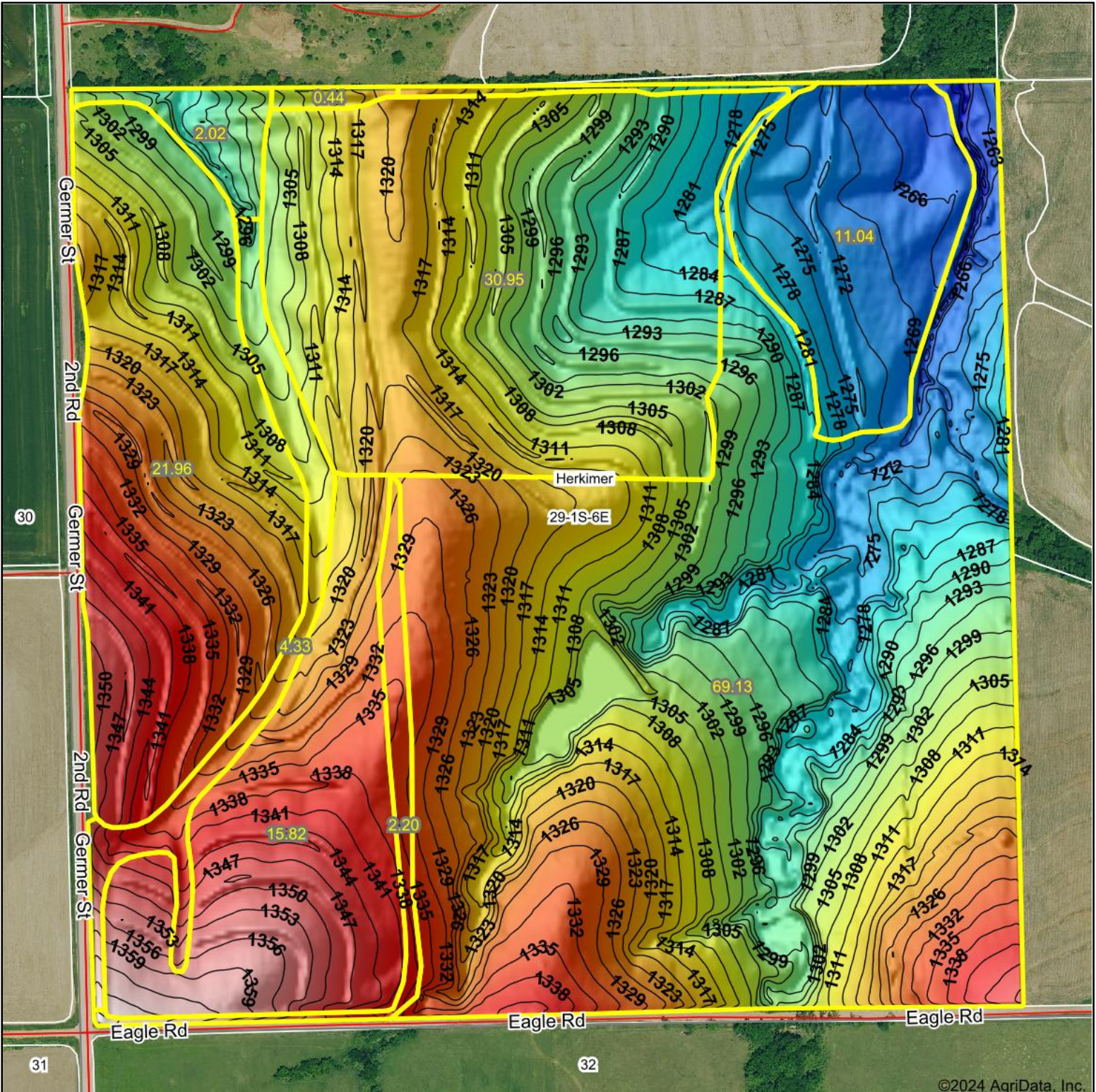
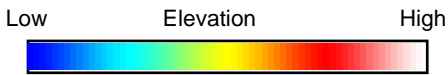


Topography Hillshade



©2024 AgriData, Inc.



Source: USGS 3 meter dem



Interval(ft): 3

Min: 1,254.7

Max: 1,369.1

Range: 114.4

Average: 1,309.8

Standard Deviation: 23 ft



2/29/2024

29-1S-6E
Marshall County
Kansas

Boundary Center: 39° 55' 58.6, -96° 46' 58.57



Maps Provided By:



© AgriData, Inc. 2023 www.AgriDataInc.com

Field borders provided by Farm Service Agency as of 5/21/2008.