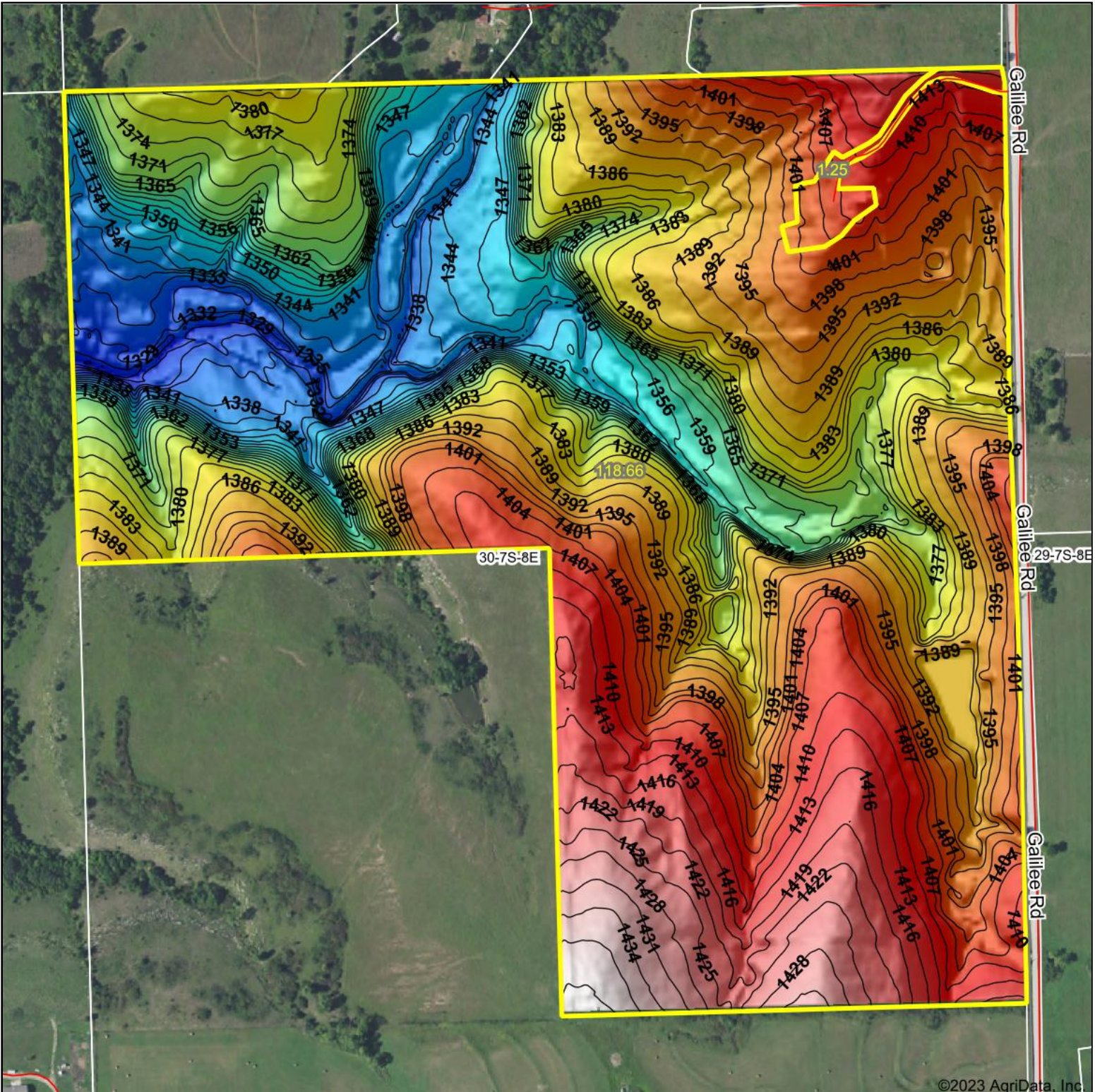


Topography Hillshade



<p>Low Elevation High</p>	<p>Source: USGS 3 meter dem</p> <p>Interval(ft): 3</p> <p>Min: 1,322.2</p> <p>Max: 1,440.7</p> <p>Range: 118.5</p> <p>Average: 1,384.9</p> <p>Standard Deviation: 26.54 ft</p>	<p>0ft 439ft 878ft</p> <p>7/3/2023</p>
---	--	---

30-7S-8E
Pottawatomie County
Kansas
 Boundary Center: 39° 24' 50.34, -96° 33' 43.67



Maps Provided By:



© AgriData, Inc. 2023 www.AgriDataInc.com

Field borders provided by Farm Service Agency as of 5/21/2008.

©2023 AgriData, Inc.