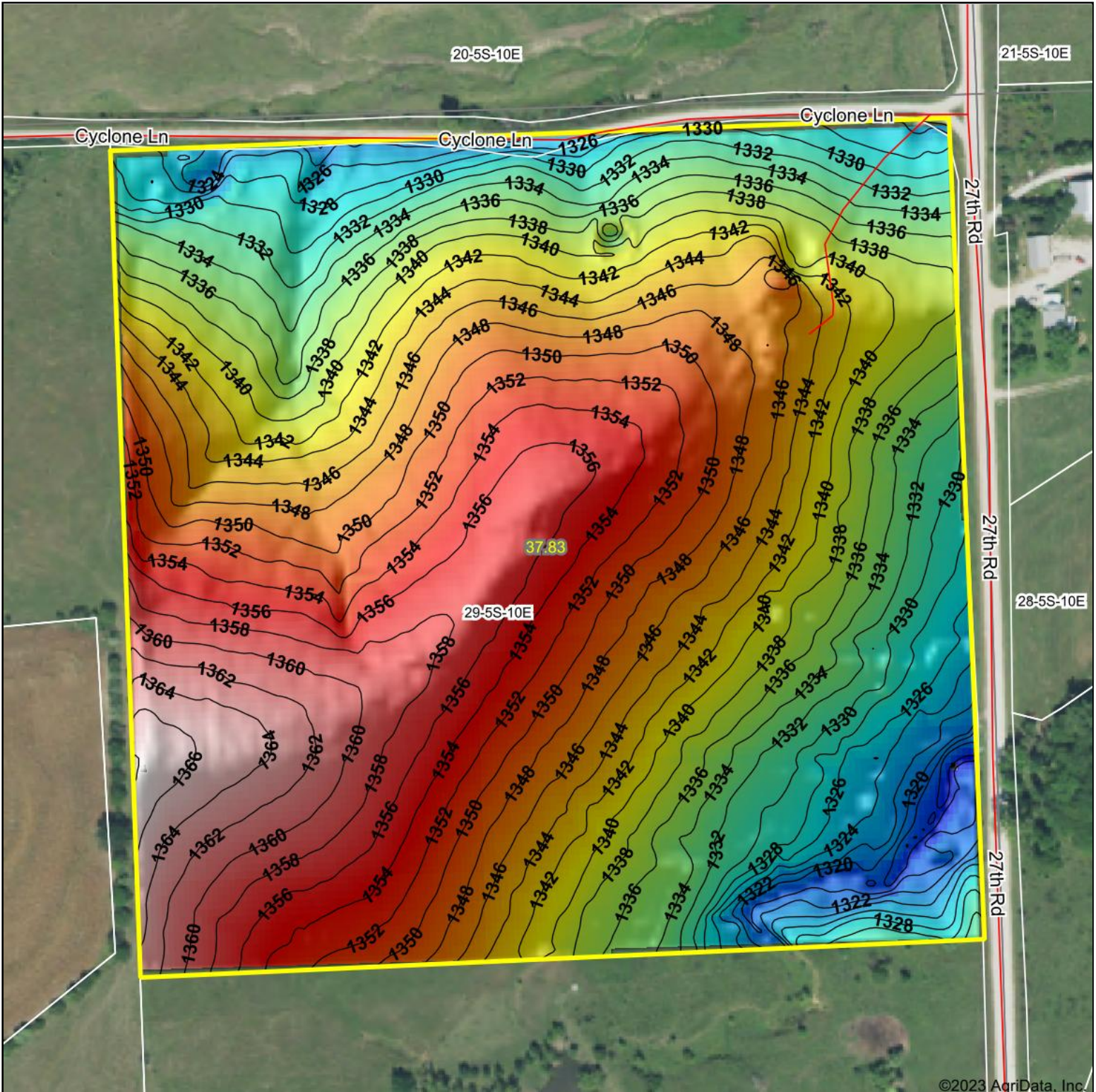


Topography Hillshade



<p>Low Elevation High</p>	<p>Source: USGS 3 meter dem</p> <p>Interval(ft): 2</p> <p>Min: 1,313.9</p> <p>Max: 1,368.3</p> <p>Range: 54.4</p> <p>Average: 1,343.5</p> <p>Standard Deviation: 11.45 ft</p>	<p>0ft 240ft 480ft</p> <p> 29-5S-10E Marshall County Kansas 8/14/2023 Boundary Center: 39° 35' 36.3, -96° 18' 59.39 </p>
---------------------------	---	--



Maps Provided By:



© AgriData, Inc. 2023 www.AgriDataInc.com

Field borders provided by Farm Service Agency as of 5/21/2008

©2023 AgriData, Inc.