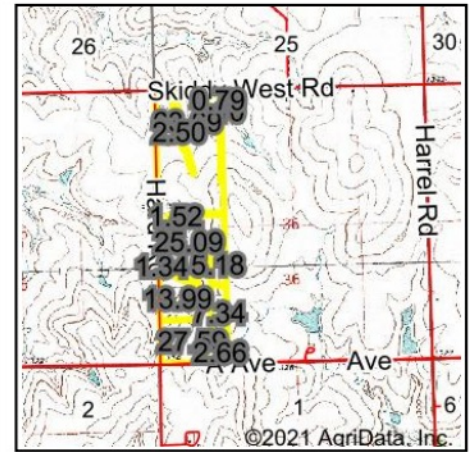
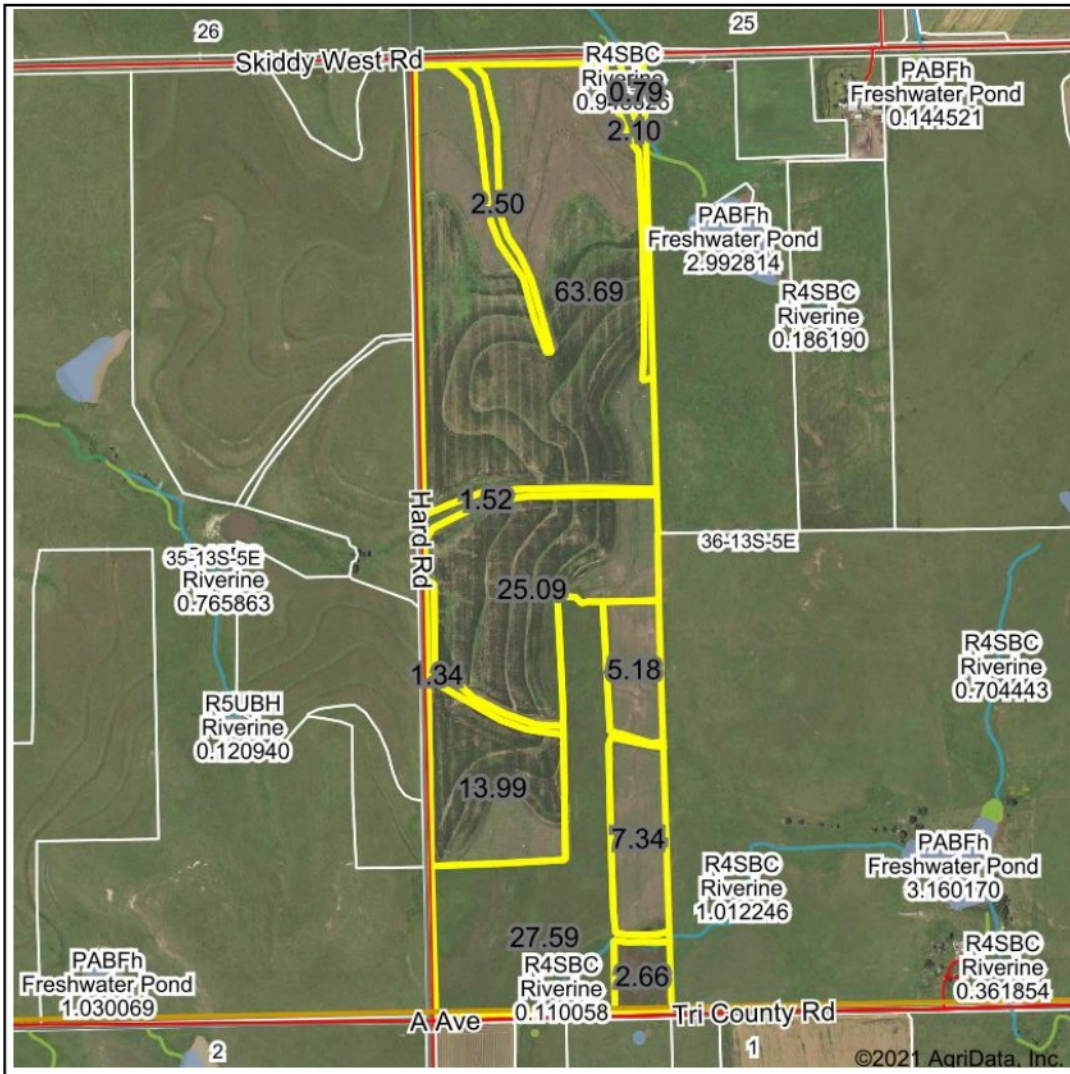


# Wetlands Map



State: **Kansas**  
 Location: **36-13S-5E**  
 County: **Geary**  
 Township: **Lyon**  
 Date: **10/20/2021**



Maps Provided By  
  
 CUSTOMIZED ONLINE MAPPING  
 © AgriData, Inc. 2021 www.AgriDataInc.com



0ft 1213ft 2425ft

Classification Code	Type	Acres
R4SBC	Riverine	0.53
PABFh	Freshwater Pond	0.17
Total Acres		0.70

Data Source: National Wetlands Inventory website. U.S. DoI, Fish and Wildlife Service, Washington, D.C. <http://www.fws.gov/wetlands/>