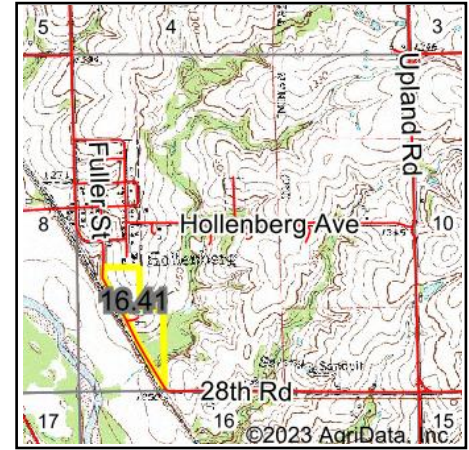


Wetlands Map



State: Kansas
Location: 9-1S-4E
County: Washington
Township: Franklin
Date: 5/22/2023



Maps Provided By:



© AgriData, Inc. 2023 www.AgriDataInc.com



0ft 517ft 1033ft

Classification Code	Type	Acres
R4SBC	Riverine	0.11
PFOA	Freshwater Forested/Shrub Wetland	0.00
Total Acres		0.11

Data Source: National Wetlands Inventory website. U.S. Dol, Fish and Wildlife Service, Washington, D.C. <http://www.fws.gov/wetlands/>