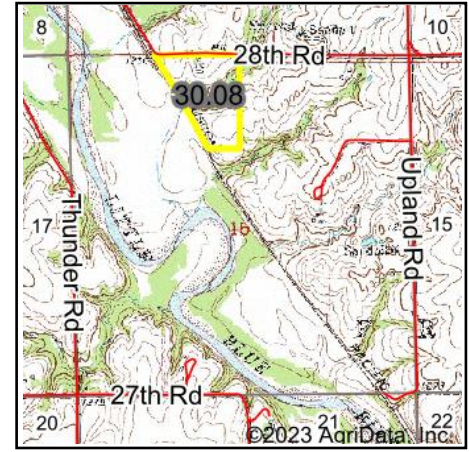


Wetlands Map



State: Kansas
Location: 16-1S-4E
County: Washington
Township: Franklin
Date: 5/22/2023



Maps Provided By:



© AgriData, Inc. 2023 www.AgriDataInc.com



0ft 432ft 864ft

| Classification Code | Type | Acres |
|---------------------|-----------------------------------|-------|
| PFOA | Freshwater Forested/Shrub Wetland | 0.64 |
| PEM1Ax | Freshwater Emergent Wetland | 0.03 |
| Total Acres | | 0.67 |

Data Source: National Wetlands Inventory website. U.S. Dol, Fish and Wildlife Service, Washington, D.C. <http://www.fws.gov/wetlands/>