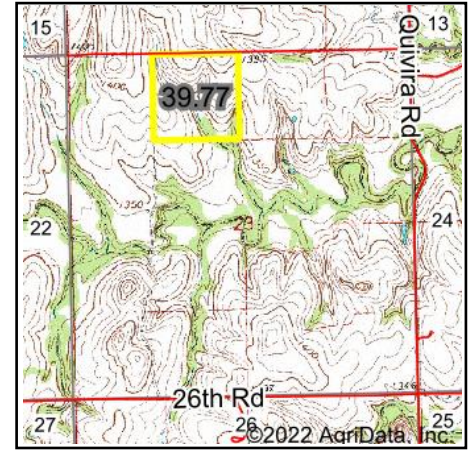
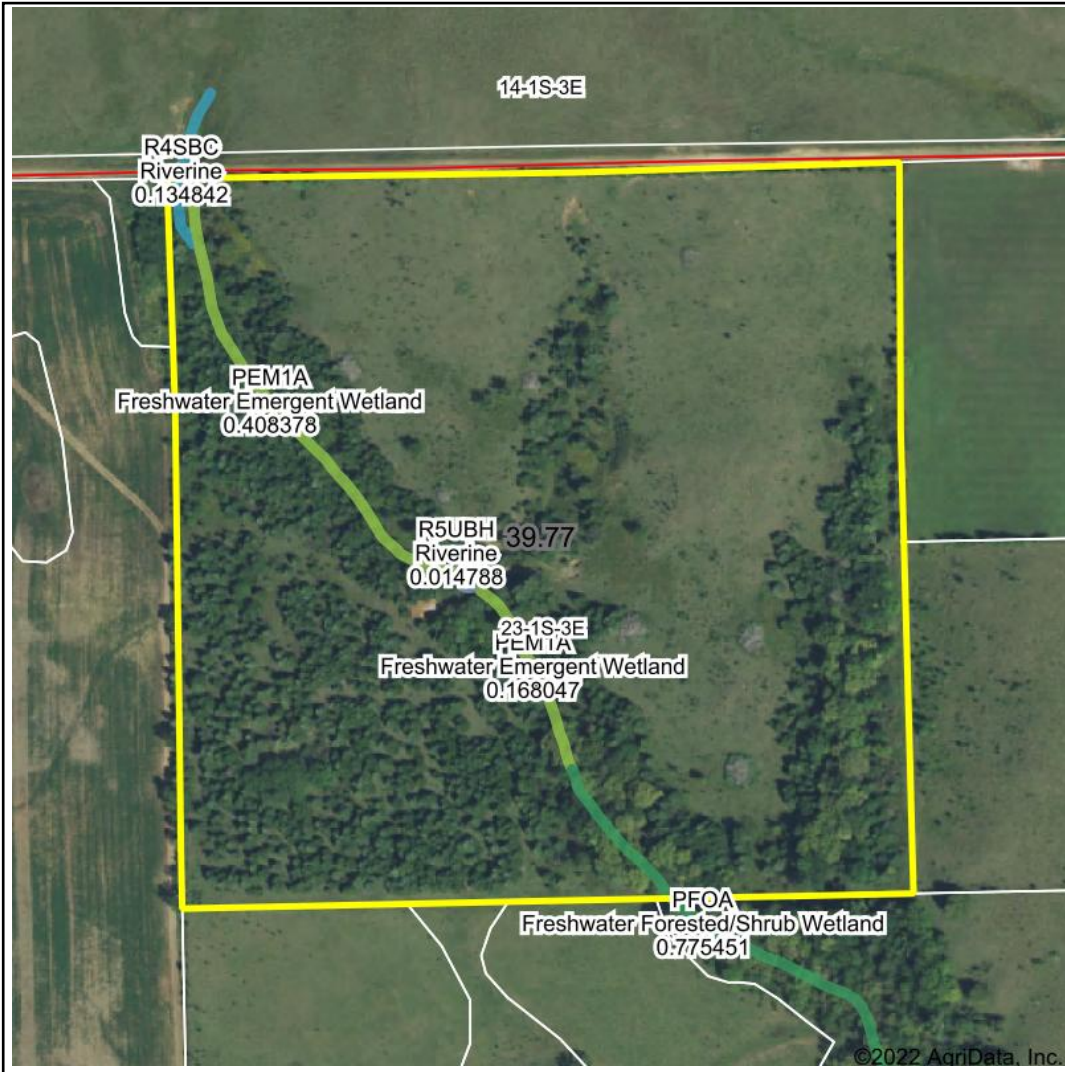


# Wetlands Map



**State:** Kansas  
**Location:** 23-1S-3E  
**County:** Washington  
**Township:** Highland  
**Date:** 1/6/2022



Maps Provided By:  
  
 CUSTOMIZED ONLINE MAPPING  
 © AgriData, Inc. 2021 www.AgriDataInc.com



0ft 398ft 796ft

Classification Code	Type	Acres
PEM1A	Freshwater Emergent Wetland	0.58
PFOA	Freshwater Forested/Shrub Wetland	0.14
PABFh	Freshwater Pond	0.09
R4SBC	Riverine	0.06
R5UBH	Riverine	0.01
Total Acres		0.88

Data Source: National Wetlands Inventory website. U.S. DoI, Fish and Wildlife Service, Washington, D.C. <http://www.fws.gov/wetlands/>