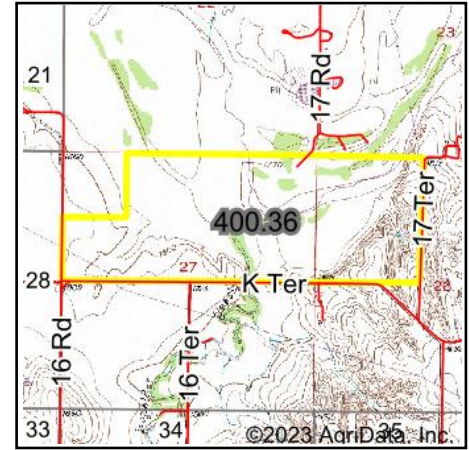
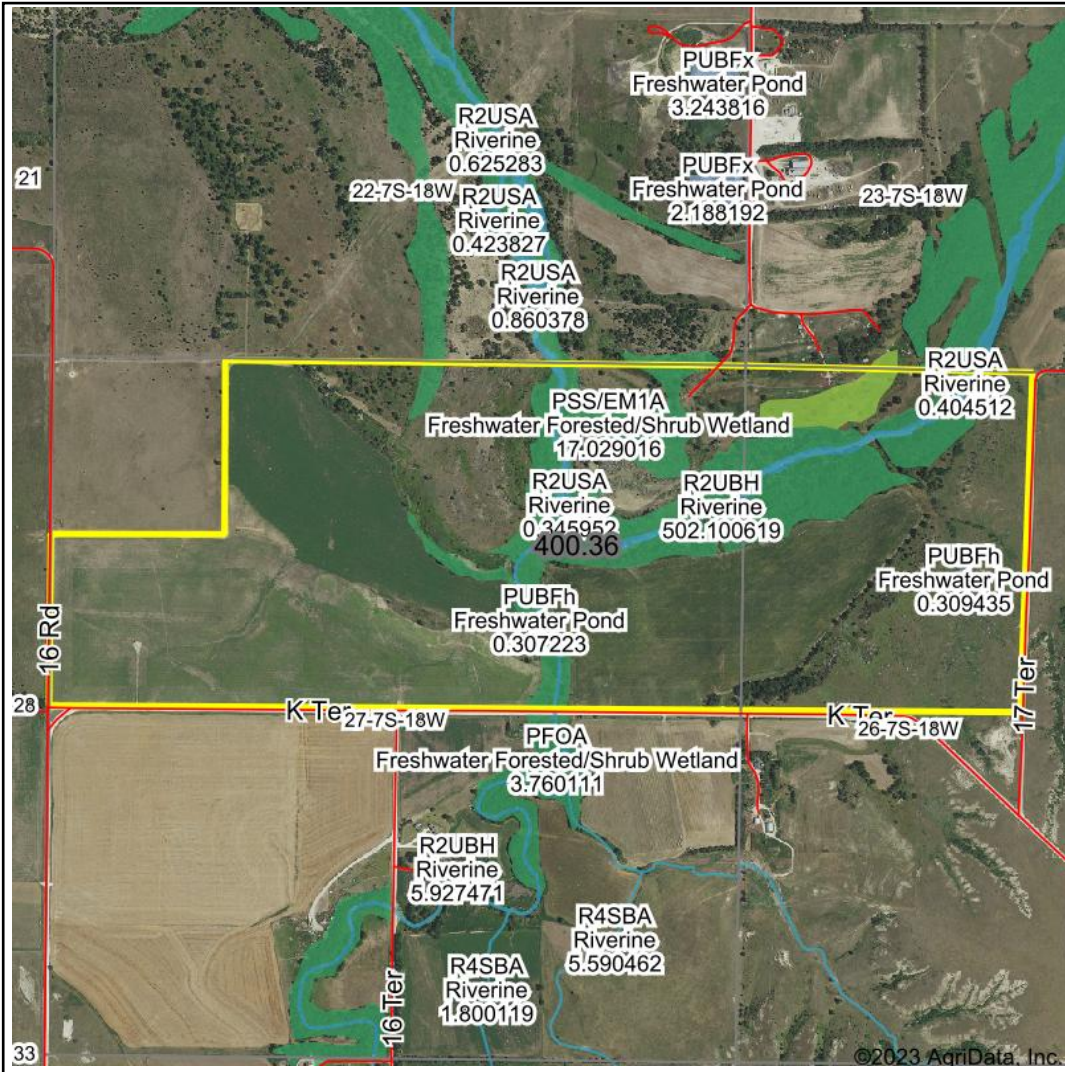


Wetlands Map



State: Kansas
Location: 27-7S-18W
County: Rooks
Township: Stockton
Date: 5/25/2023



Maps Provided By:

 CUSTOMIZED ONLINE MAPPING
 © AgriData, Inc. 2023 www.AgriDataInc.com



0ft 1664ft 3327ft

Classification Code	Type	Acres
PFOA	Freshwater Forested/Shrub Wetland	43.18
PSS/EM1A	Freshwater Forested/Shrub Wetland	17.02
R2UBH	Riverine	7.34
PEM1A	Freshwater Emergent Wetland	5.82
PFO/EM1A	Freshwater Forested/Shrub Wetland	1.34
R2USA	Riverine	0.64
PUBFh	Freshwater Pond	0.62
Total Acres		75.96

Data Source: National Wetlands Inventory website. U.S. DoI, Fish and Wildlife Service, Washington, D.C. <http://www.fws.gov/wetlands/>