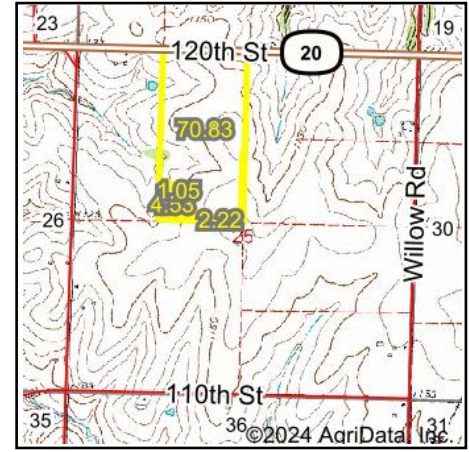


# Wetlands Map



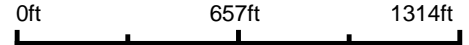
**State:** Kansas  
**Location:** 25-4S-18E  
**County:** Brown  
**Township:** Washington  
**Date:** 2/2/2024



Maps Provided By:



© AgriData, Inc. 2023 [www.AgriDataInc.com](http://www.AgriDataInc.com)



Classification Code	Type	Acres
	Total Acres	0.00

Data Source: National Wetlands Inventory website. U.S. DoI, Fish and Wildlife Service, Washington, D.C. <http://www.fws.gov/wetlands/>