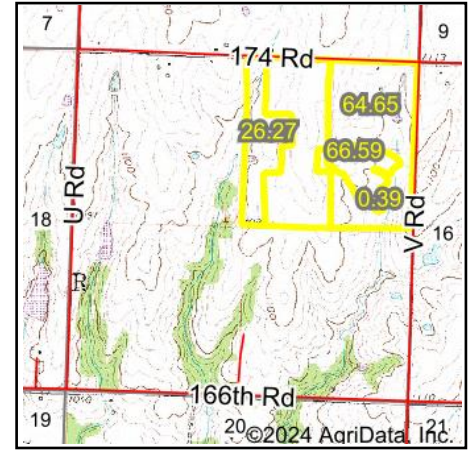
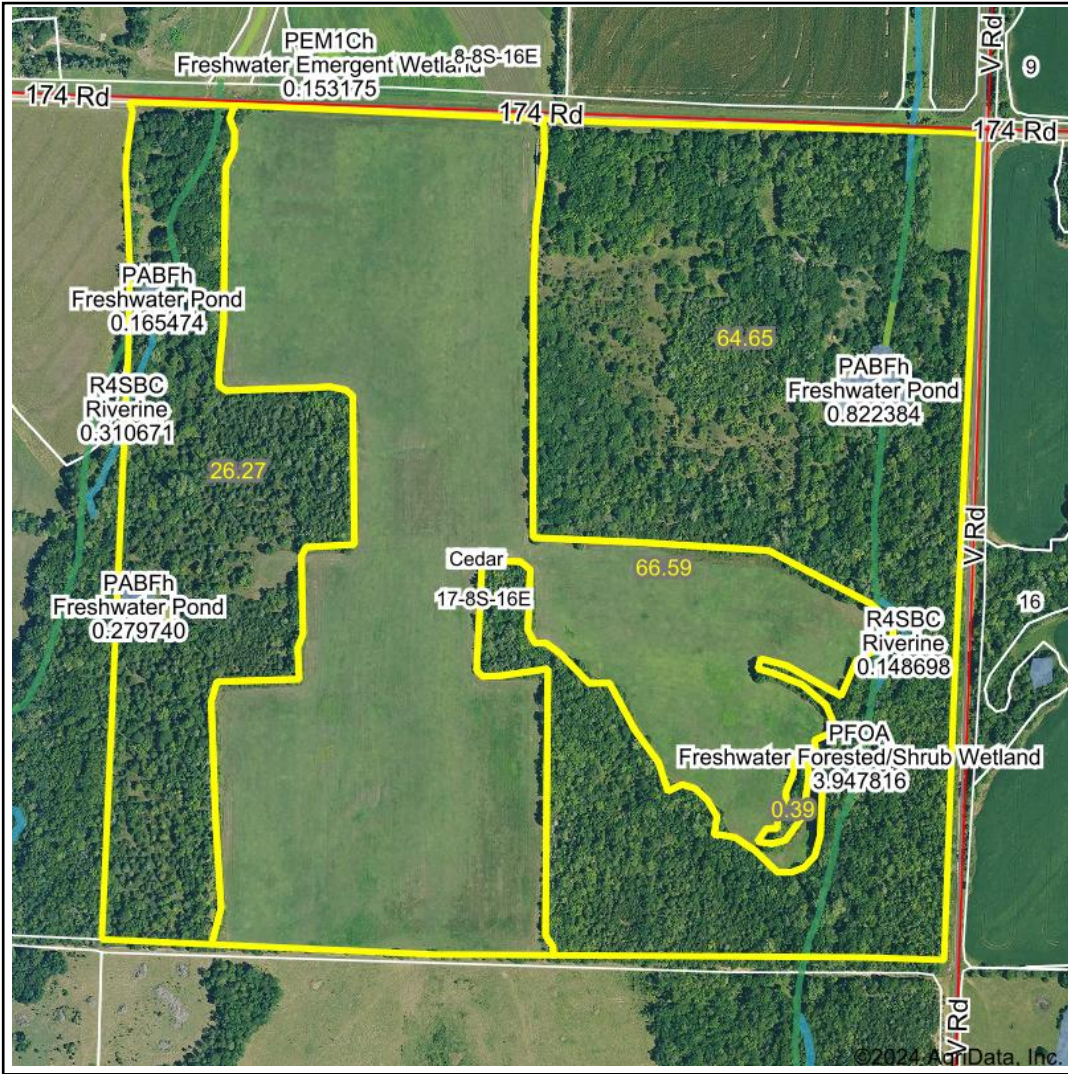


Wetlands Map



State: Kansas
Location: 17-8S-16E
County: Jackson
Township: Cedar
Date: 2/27/2024



Maps Provided By:



© AgriData, Inc. 2023 www.AgriDataInc.com



0ft 689ft 1378ft

Classification Code	Type	Acres
PFOA	Freshwater Forested/Shrub Wetland	1.36
PABFh	Freshwater Pond	1.27
R4SBC	Riverine	0.36
PEM1Ch	Freshwater Emergent Wetland	0.06
	Total Acres	3.05

Data Source: National Wetlands Inventory website. U.S. DoI, Fish and Wildlife Service, Washington, D.C. <http://www.fws.gov/wetlands/>