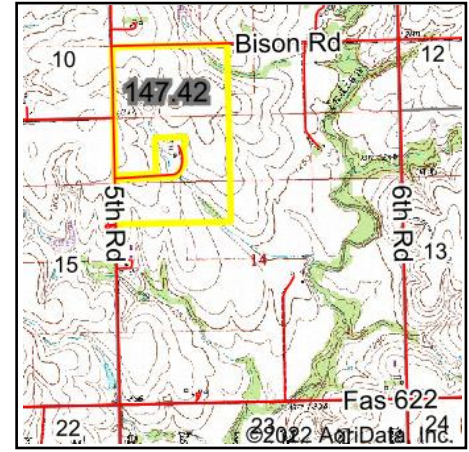
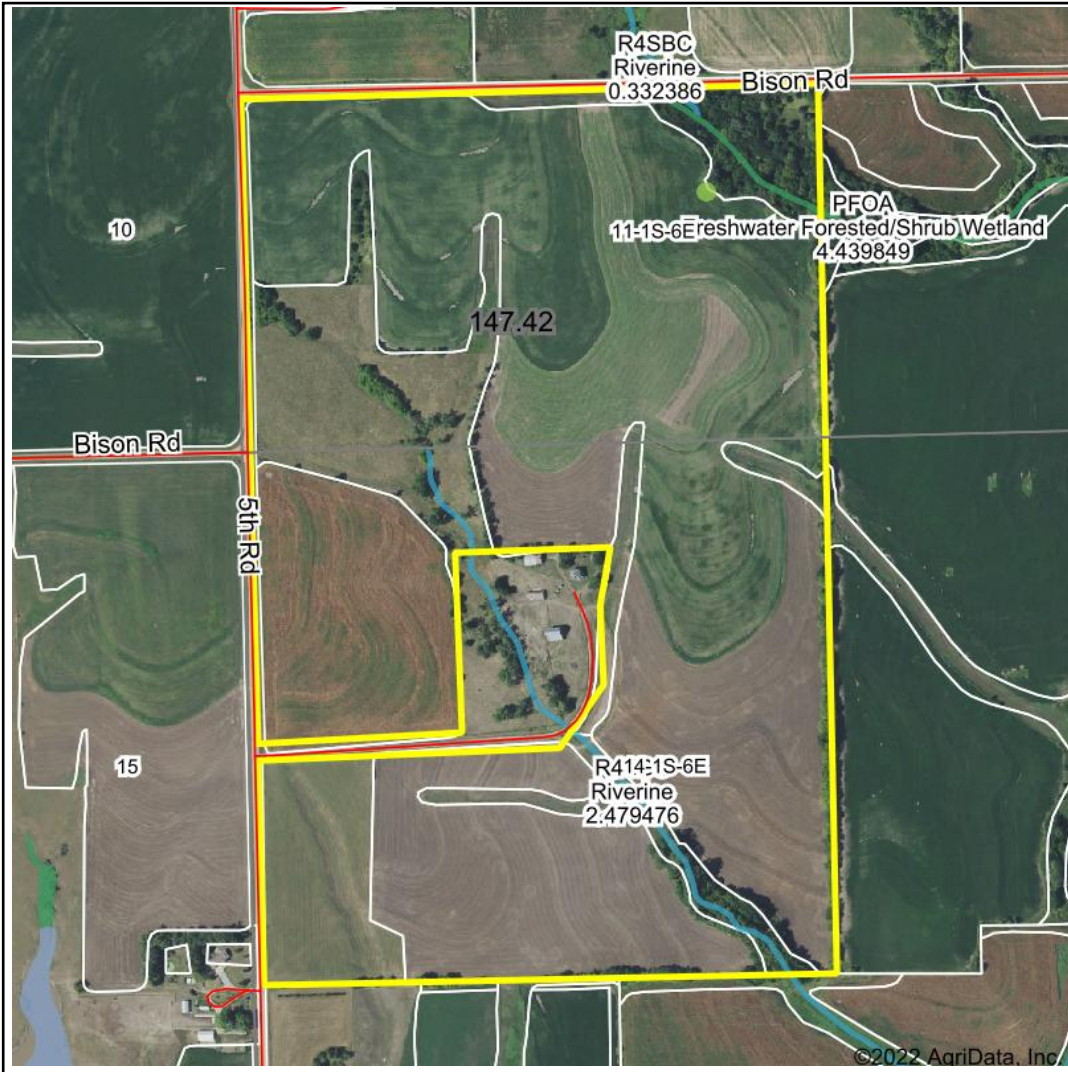


Wetlands Map



State: Kansas
Location: 14-1S-6E
County: Marshall
Township: Herkimer
Date: 9/27/2022



Maps Provided By:



© AgriData, Inc. 2021 www.AgriDataInc.com



0ft 806ft 1613ft

| Classification Code | Type | Acres |
|---------------------|-----------------------------------|-------|
| R4SBC | Riverine | 0.84 |
| PFOA | Freshwater Forested/Shrub Wetland | 0.31 |
| PEM1Ch | Freshwater Emergent Wetland | 0.09 |
| Total Acres | | 1.24 |

Data Source: National Wetlands Inventory website. U.S. DoI, Fish and Wildlife Service, Washington, D.C. <http://www.fws.gov/wetlands/>