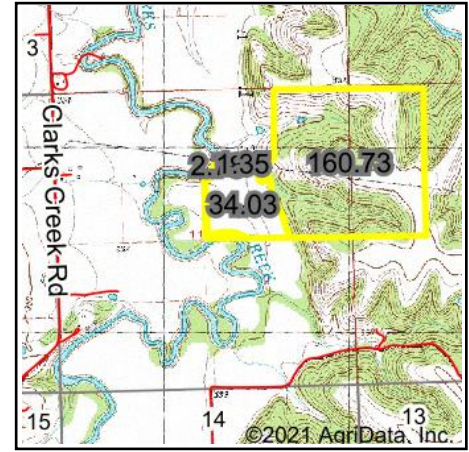
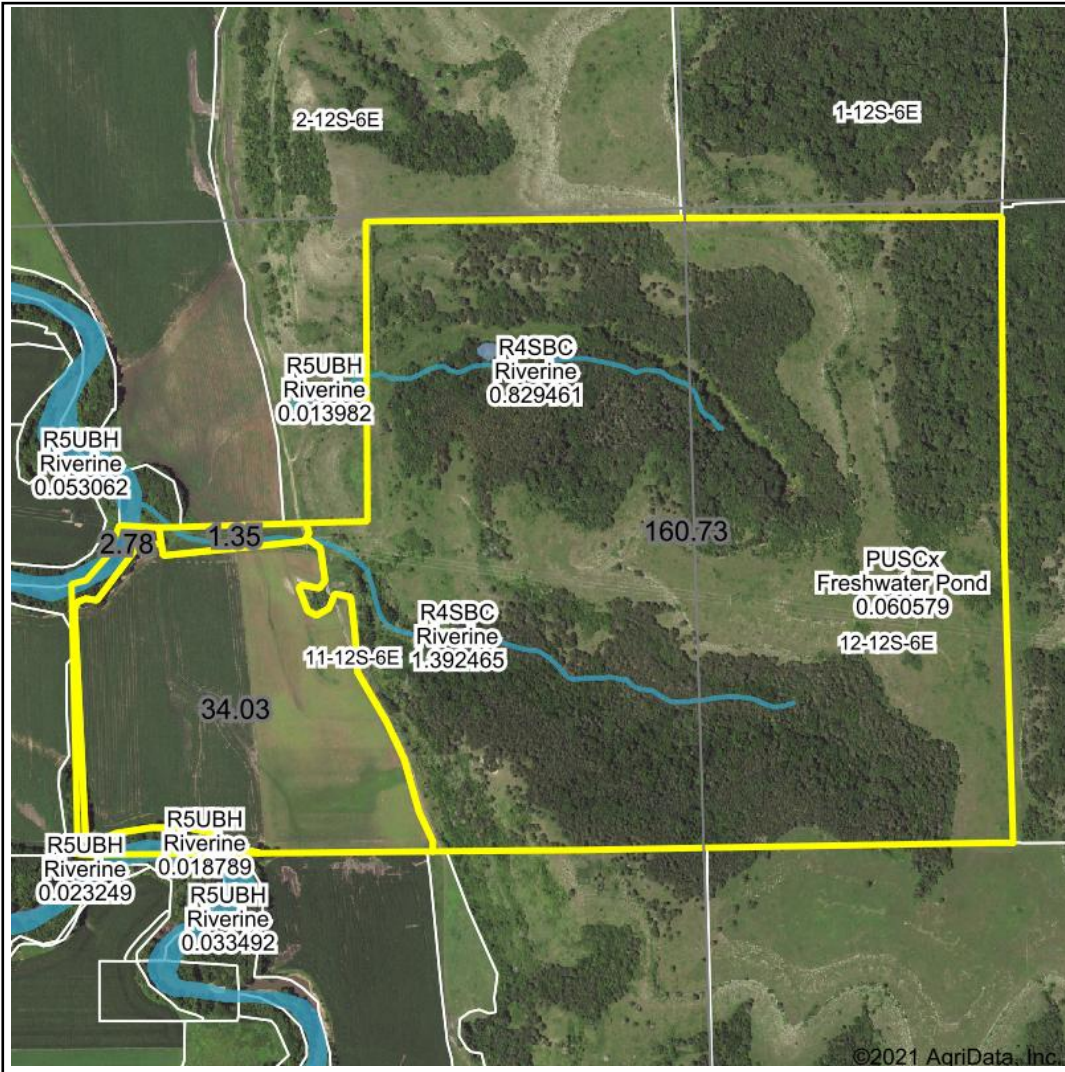


Wetlands Map

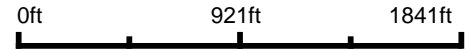
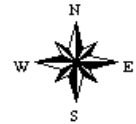


State: Kansas
Location: 11-12S-6E
County: Geary
Township: Jefferson
Date: 2/20/2021



Maps Provided By:

 CUSTOMIZED ONLINE MAPPING
 © AgriData, Inc. 2021 www.AgriDataInc.com



Classification Code	Type	Acres
R4SBC	Riverine	2.07
R2UBG	Riverine	1.07
PUSCx	Freshwater Pond	0.11
PUBFh	Freshwater Pond	0.10
R5UBH	Riverine	0.03
Total Acres		3.38

Data Source: National Wetlands Inventory website. U.S. DoI, Fish and Wildlife Service, Washington, D.C. <http://www.fws.gov/wetlands/>