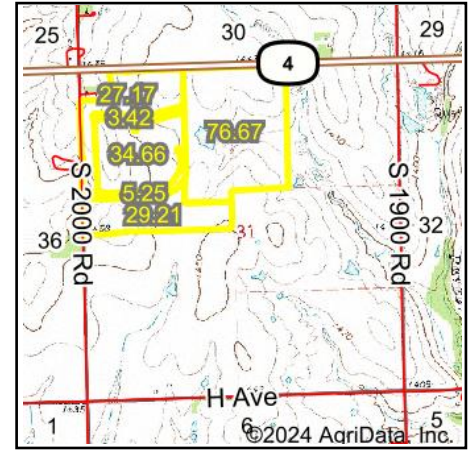
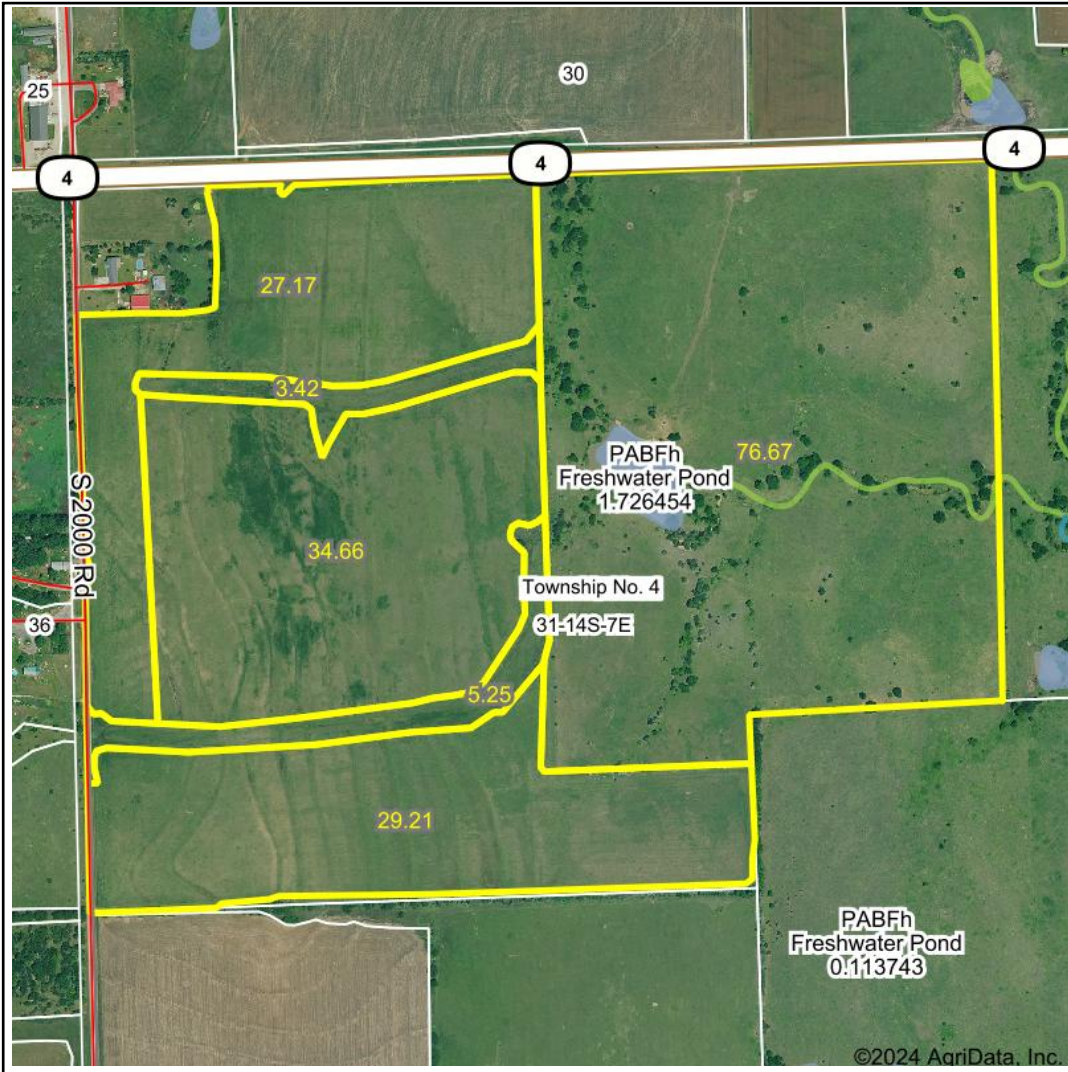


# Wetlands Map



**State:** Kansas  
**Location:** 31-14S-7E  
**County:** Morris  
**Township:** Township No. 4  
**Date:** 3/13/2024



Maps Provided By:



© AgriData, Inc. 2023 [www.AgriDataInc.com](http://www.AgriDataInc.com)



0ft                      791ft                      1582ft

Classification Code	Type	Acres
PABFh	Freshwater Pond	1.73
PEM1A	Freshwater Emergent Wetland	0.65
Total Acres		2.38

Data Source: National Wetlands Inventory website. U.S. Dol, Fish and Wildlife Service, Washington, D.C. <http://www.fws.gov/wetlands/>