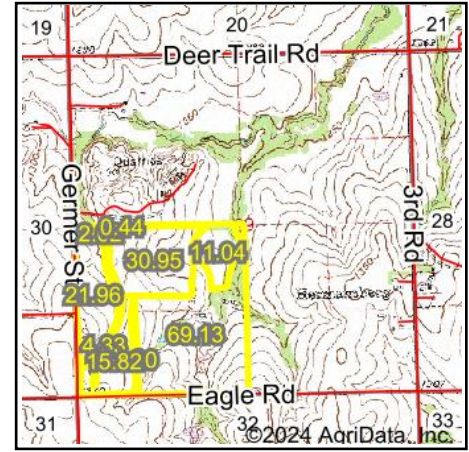
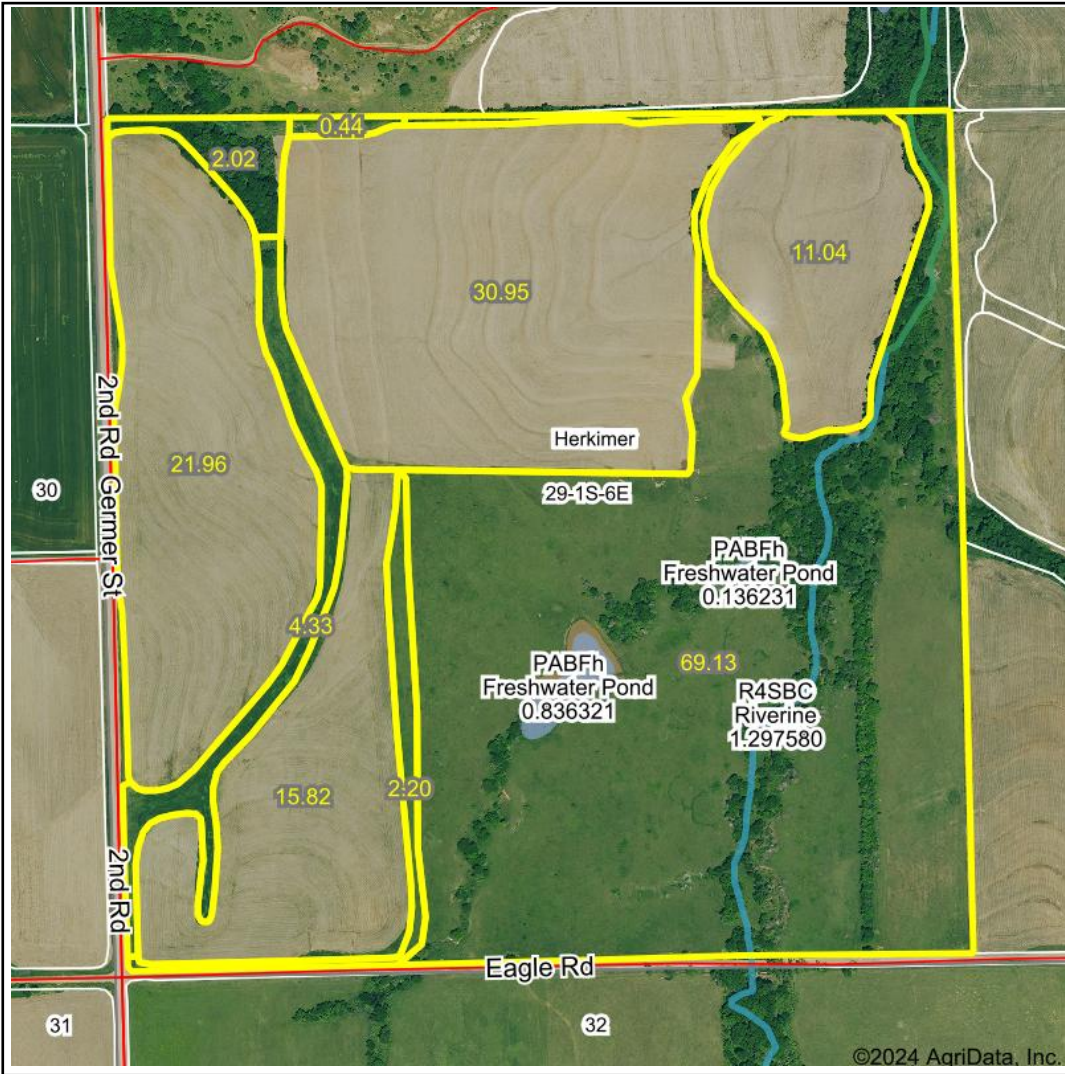


# Wetlands Map



**State:** Kansas  
**Location:** 29-1S-6E  
**County:** Marshall  
**Township:** Herkimer  
**Date:** 2/29/2024



Maps Provided By:



© AgriData, Inc. 2023 [www.AgriDataInc.com](http://www.AgriDataInc.com)



0ft 684ft 1368ft

Classification Code	Type	Acres
PABFh	Freshwater Pond	0.97
R4SBC	Riverine	0.95
PFOA	Freshwater Forested/Shrub Wetland	0.38
Total Acres		2.30

Data Source: National Wetlands Inventory website. U.S. DoI, Fish and Wildlife Service, Washington, D.C. <http://www.fws.gov/wetlands/>