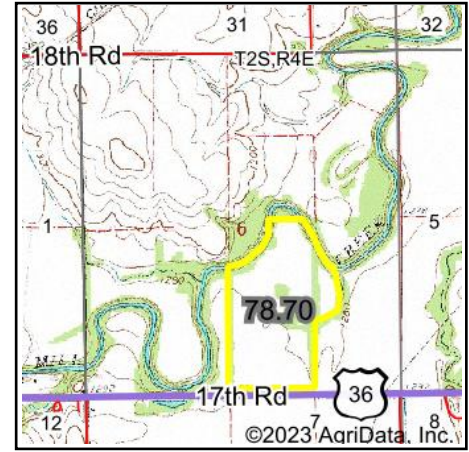
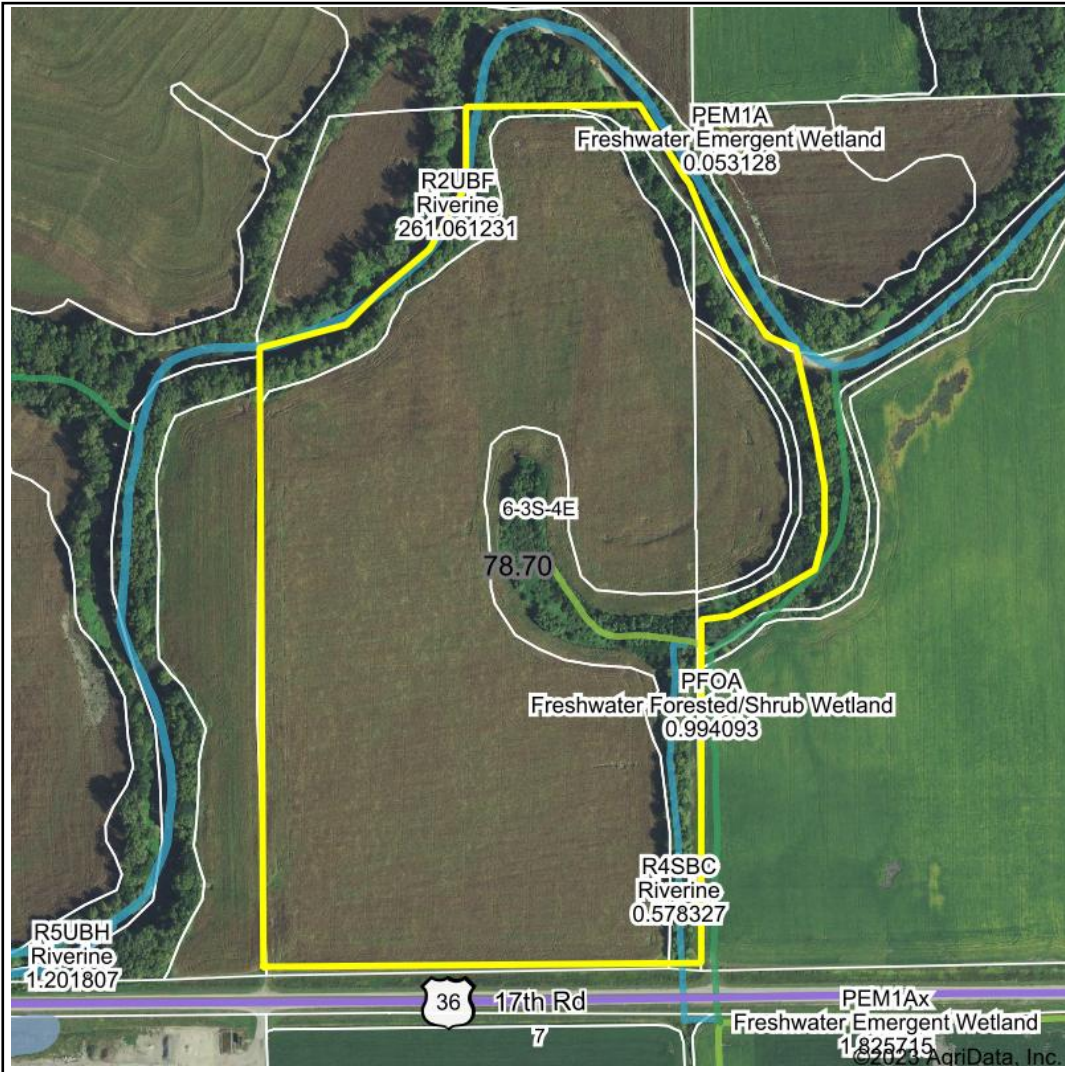


Wetlands Map



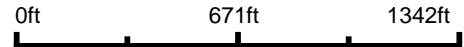
State: Kansas
Location: 6-3S-4E
County: Washington
Township: Logan
Date: 2/17/2023



Maps Provided By:



© AgriData, Inc. 2021 www.AgriDataInc.com



Classification Code	Type	Acres
R4SBC	Riverine	0.46
R2UBF	Riverine	0.41
PEM1A	Freshwater Emergent Wetland	0.26
PFOA	Freshwater Forested/Shrub Wetland	0.00
Total Acres		1.13

Data Source: National Wetlands Inventory website. U.S. DoI, Fish and Wildlife Service, Washington, D.C. <http://www.fws.gov/wetlands/>