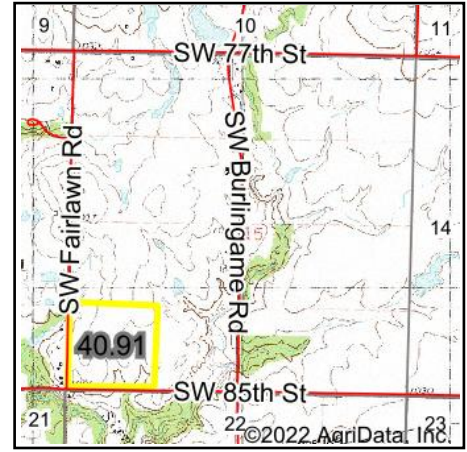
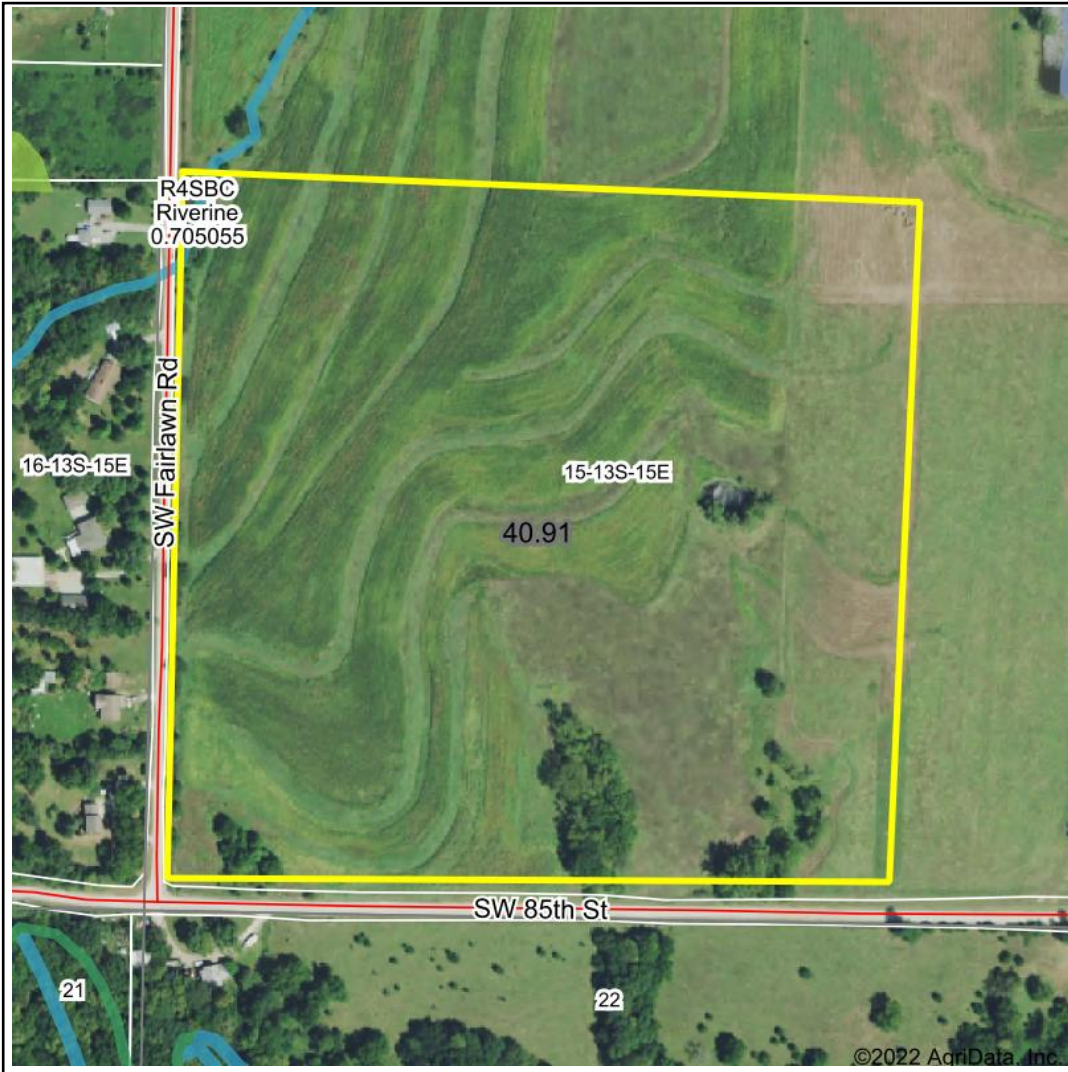


Wetlands Map



State: Kansas
Location: 15-13S-15E
County: Shawnee
Township: Williamsport
Date: 12/30/2022



Maps Provided By:



© AgriData, Inc. 2021 www.AgriDataInc.com



0ft 3438ft 6877ft

Classification Code	Type	Acres
R4SBC	Riverine	0.08
Total Acres		0.08

Data Source: National Wetlands Inventory website. U.S. DoI, Fish and Wildlife Service, Washington, D.C. <http://www.fws.gov/wetlands/>